

FIGURE 1: Some of the measurements and morphological characters studied (Upper: male M4; lower: female F1).

©2007 Alberto Joven Araus

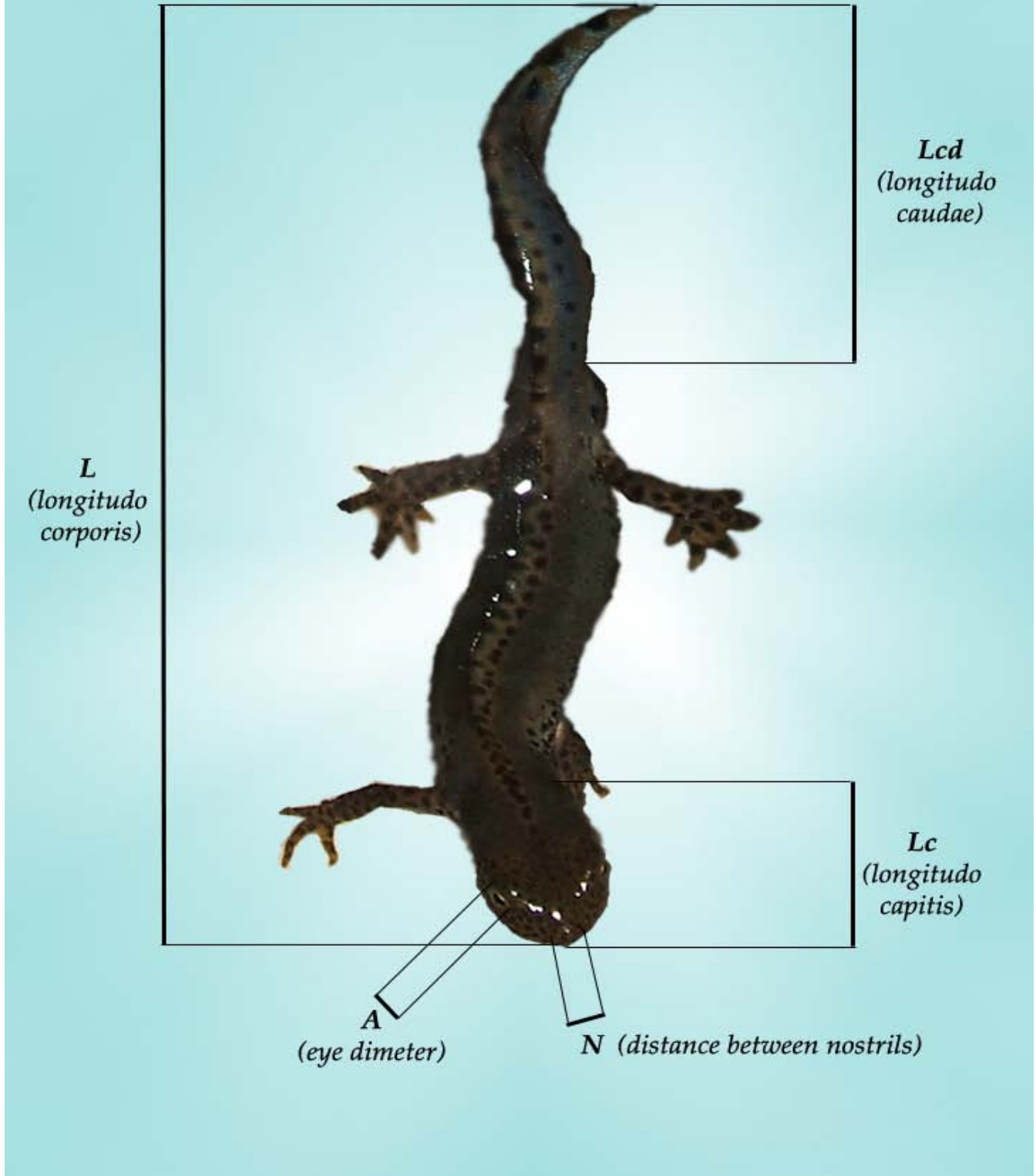


FIGURE 2: Morphometric measures used.

Code	Males: tone		Females: tone		Females: spot-line background colour	
1	Greyish	M3, M5	Smooth brown	F2, F4, F6	White	F4, F5

2	Blue-greyish	M1	Mottled brown	F1, F3	White-bluish	F2, F6
3	Blue	M2, M4, M6	Very mottled brown	F5	Bluish	F1, F3

TABLE 1: Qualitative data under study

	Weight (g)	L (mm)	Lc (mm)	Lcd (mm)	N (mm)	A (mm)
Males	2.83±0.40	812.17±38.26	131.83±41.83	359.33±41.83	28.33±4.08	27.66±0.98
Females	4.22±0.84	927.33±68.28	134.66±3.01	473.67±49.69	33.17±2.56	33.33±2.25

TABLE 2: Means and standard deviations of quantitative data measured in the laboratory

	Number of spots on the right flank	Number of spots on the left flank	Number of spots on the face	Crest design: % of zigzag	Crest design: number of spots
Males	36.33±12.38	37.83±12.08	22.83±4.70	0.69±0.12	6.67±2.80
Females	18.33±6.65	17.67±4.08	-	-	-

TABLE 3: Means and standard deviations of morphological features measured from photographs

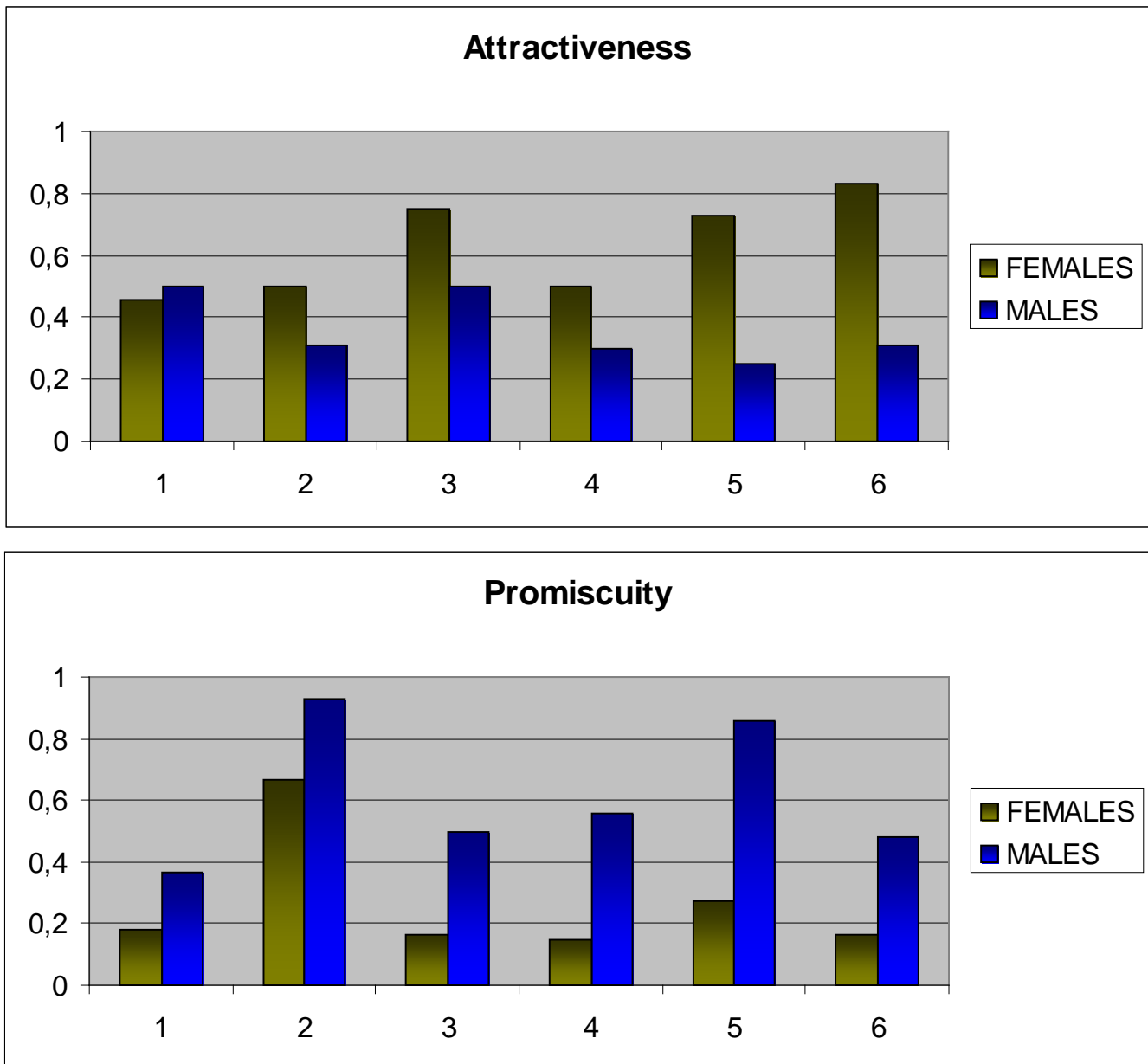


FIGURE 3: Attractiveness (upper) and Promiscuity (lower) calculated for each individual.

SUPPLEMENTARY MATERIAL: Females' preferences in oviposition

